

Visiting our office

Hello, so you're coming to see us in person?

To make your visit a pleasant experience we've put together this handy guide on how to get here and what to expect when you arrive.

We're looking forward to welcoming you!

Getting here by tram

The tram is the easiest way to reach us via public transport.

Our tram stop is accessible from Nottingham Train Station and from various park and ride locations.

Use this link to discover which one is best for you - thetram.net/park-and-ride

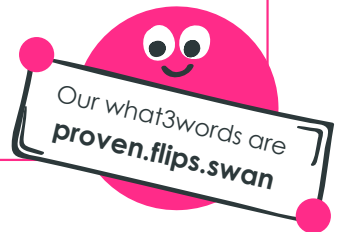


When using the tram you must buy a ticket before boarding, you can't buy one on the Tram. The easiest way to do this is via the NetGo app.

Our address and what3words

Our address is:

**Unit 3 Isaac Newton Centre
Nottingham Science Park
University Boulevard
Nottingham
NG7 2RH**



Directions from the Tram

Get off the tram at the University of Nottingham stop; cross over the road towards the tall rusty column with Nottingham Science Park marked on it.



You can now follow the "getting here by car" part of this document to find our offices.

Getting here by Car

Turn off University Boulevard into Nottingham Science Park.

This is marked with a tall rusty column, on the right hand side of the road as you turn into the Science Park.



Continue straight and take a left immediately after two red post boxes.



Continue along this road for a short time. The entrance to the car parking area is shown by the arrows.



Our office



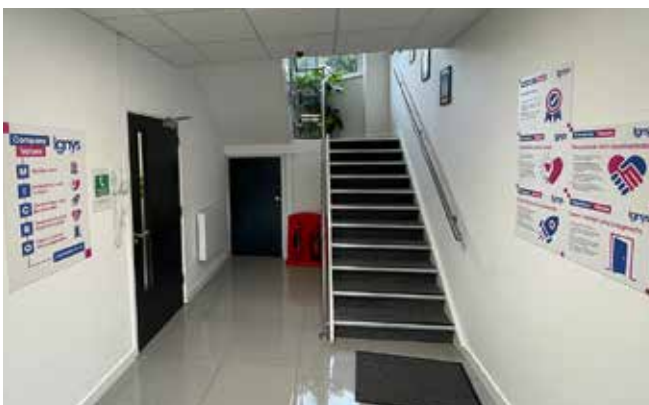
The office entrance is directly below the large Ignys sign.



To let us know you are here simply press the silver button next to the 'IGNYS' label.

This rings a bell inside the building (you'll probably hear it) and lets one of the team know you have arrived.

One of us will come down shortly after to let you in then show you the way to where you need to be.



This is what our main hallway looks like.

This has stairs going up the toilets and the door to the left takes you to the meeting rooms, kitchen and the rest of downstairs.



There are two toilets at the top of the stairs.

These are unisex so can be used by anyone.

Please don't turn right at the top of the stairs, this is where we work on super-secret projects!

Our office continued



The meeting room, kitchen, and collaborative working spaces are through this door on the left downstairs.

Immediately through this door, to the right is the kitchen area.



We have selections of teas, coffee, water, as well as a range of refrigerated soft drinks. You are welcome to drink whatever you like.

If you want another beverage at any time, please feel free to ask.



The meeting room door is opposite the kitchen.



The meeting room has air conditioning and a window that can be opened.

We want you to be comfortable. So, please let us know if the room is too hot or cold, or if the air con is noisy.

Contact us

enquiries@ignys.co.uk • 0115 772 2825 • ignys.co.uk